



Photos: Thomas Bocquet / Cetetherm

France – Saint Etienne / Residence Portail rouge

- 5 two-Pass district heating substations Cetetherm Maxi – low return temperature systems
- Brazed heat exchangers
- Residence of 420 apartments over 5 building blocks
- Average capacity: heating 600kW & DHW 130kW (total of 1,9 MW)

- Article in French professional magazine CFP november 2021:

<https://www.cetetherm.com/download/18.3650d8d117d5c47b93c11e/1638179916956/Article%20Portail%20rouge%20CFP%20novembre%202021.pdf>



Photos: David Amédée / Cetetherm

France – Montbrison (42) / Project Beauregard

- 6 two-Pass district heating substations Cetetherm Maxi
- DHW & heating for 10 apartment blocks for a total of 392 apartments
- Average capacity: heating 390kW & DHW 114kW
- Low return temperature
- Adapted model; very compact on 2 separate frames for this cramped boiler room



Factory photos: David Bubenik / Cetetherm

France – Angers / district Belle Beille / Loire

- About 20 district heating substations in two-Pass version
- DHW & heating for apartment blocks, schools, university restaurant, swimming pool, gymnasium
- Delivered without controller on customer's request
- Partial deliveries over 3 years



Photos: Thomas Bocquet / Cetetherm

France – Thorens-Glières – French Alps

- 1 district heating substation Maxi Compact connected to the mini district heating network of the village
- Connection to a 3-level apartment block
- Heating only : 40kW



Photos d'usine: David Bubenik / Cetetherm

France – Corbie – North of France

- About 20 district heating substations with plates & gaskets connected to a small district heating network in the town of Corbie, 6500 inhabitants
- 2km5 district heating network powered by a wood boiler
- Supplying heat to public buildings like hospital, schools, colleges etc. In total 24 delivery points corresponding to 1,000 housing equivalents
- Investment 4,2 millions, subsidy of 2,1M€ (Region, State and Europe)
- Heating network inauguration January 2021
- [Boves | Corbie - Somme Region – YouTub](#)



Photos: Thierry Moreau / Cetetherm

France – Mauges sur Loire / Congregation of the Sister of Providence

- 4 substations for a monastery, an elderly home and a hotel
- Adapted models for this vaulted boiler room with a very low and tight access
- Heating network powered by a propane boiler



France – Angers - Loire

20 substations Cetetherm Maxi
with IQHeat controller

- District heating network of 29 km, including 14 km of energy transfer by Maxi substations
- 14.000 users from the Angers suburbs
- Network connection to a cogeneration plant
- Low return temperature network for optimal energy savings



Photos: David Amédée / Cetetherm

Switzerland – SIG Genève, district Chapelle Les Sciens

- 13 district heating substations
- Heating & DHW semi-instantaneous in parallel
- Various apartment blocks
- Average capacity: heating 118kW & DHW 112kW



Sweden – Ronneby

- District heating substation with Artificial Intelligence (AI)
- Optimal comfort for a 40 apartments block
- Self-learning system offering lower energy bills and carbon emissions

Central Park, Prague 3 - Czechia

- One of the most expensive housing project in the Czech Republic
- 10 high-rise buildings
- 1 central substation (hot water) 2,500 kW
- 10 secondary substations Heating & DHW
- Operated by Dalkia Czech Republic



City Tower, Prague Czechia

- 2nd tallest building in the Czech Republic
- 5 skids (hot water), Heating, Ventilation, DHW
- Total capacity 4,000 kW
- 2 pressure zones



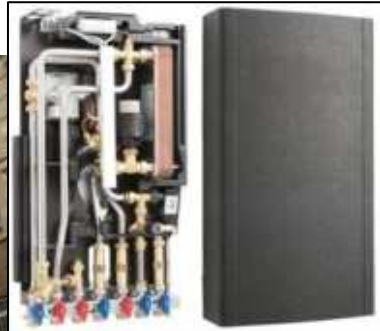
Stadion Slavia, Prague Czechia

- The most modern football stadium in the Czech Republic
- 4 skids (hot water), Heating, Ventilation and the pitch
- Total capacity 4,700 kW



Česká spořitelna, Brno Czechia

- 2 steam skids (preparation of heating water)
- 24 HIU Micro
- Up to 50 kW for DHW



Prosek Point, Prague Czechia

- 2 hot water substations, Heating and Ventilation
- Total capacity of 2,700 kW

